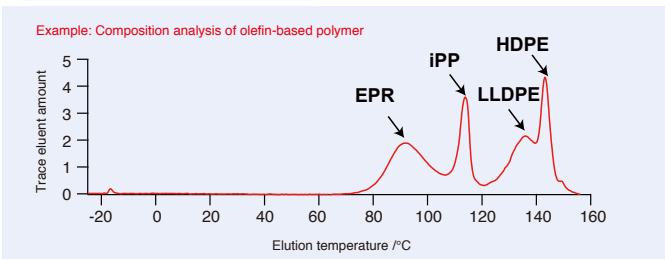
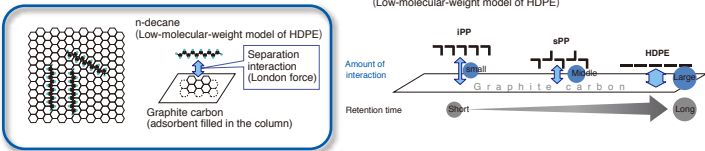


Evaluation of Recycled Resin Materials

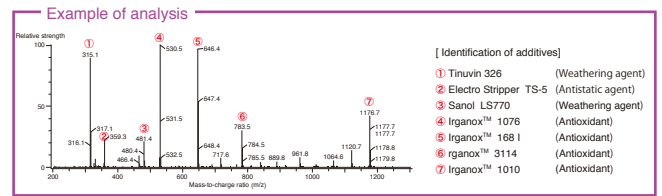
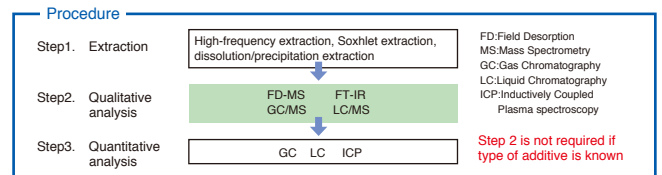
If there is a void in an insulating material, an electric field will concentrate in that part, and a small amount of discharge will occur. This is called a partial discharge. By detecting the transfer of the charge (charge amount) taking place at this time, any defect in the material can be evaluated on a non-destructive basis. The degree of a void can be evaluated by determining the level of the voltage at the time of the start of the partial discharge.

▶ Carbon fiber-based composite materials

High-temperature HPLC



▶ Analysis of additives

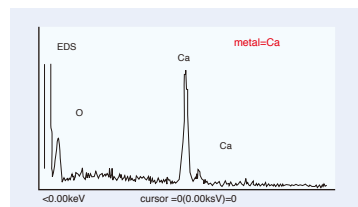
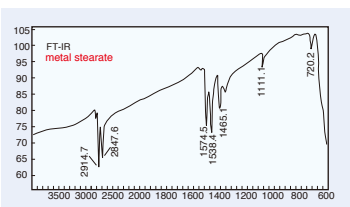
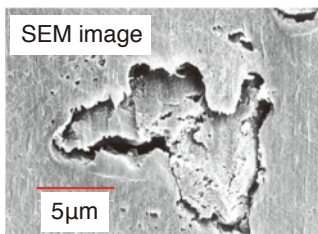


Our proprietary analytical technology makes high-precision and quick analysis possible.

Other structure/composition analysis NMR, IR, etc



▶ Identification of foreign substances



▶ Evaluation of strength and durability

