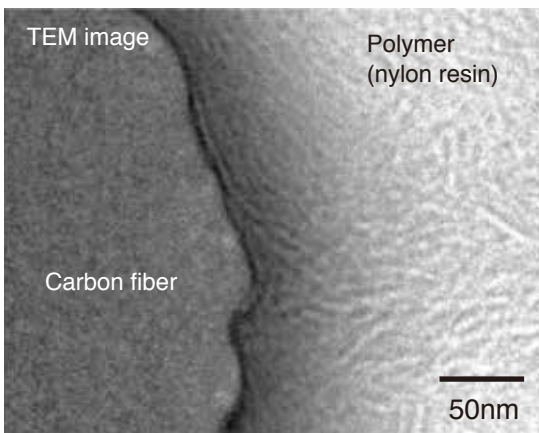


# Analysis Package of Light Materials like CF and CNF-based Composites for Automobiles

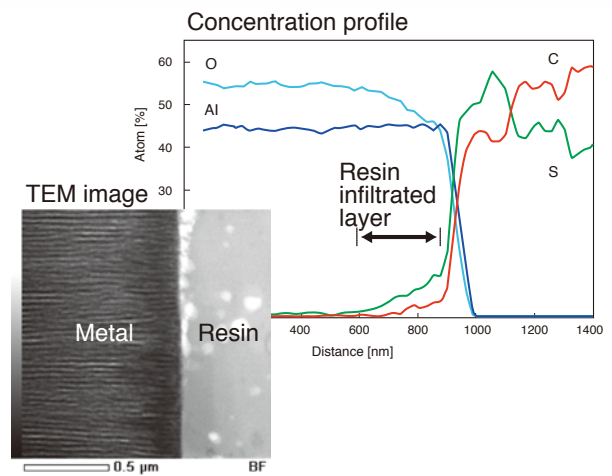
For car weight reduction, a broad range of R&D is being carried out from many perspectives of use of plastics in place of metals, bonding of the same or different types of materials, use of fiber-reinforced plastics, etc. We have made advanced equipment available for our service and will propose testing methods to meet your needs to perform R&D and provide you with results of evaluations.

## ▶ Carbon fiber-based composite materials

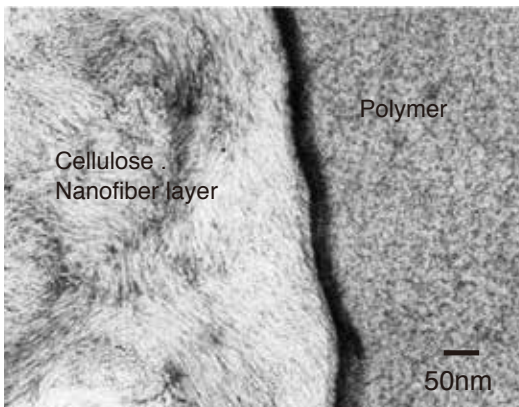


Evaluation of carbon fiber (CF)/polymer interface structure and CF on crystal structure (lamella) of polymer

## ▶ Metal / resin-based composite materials

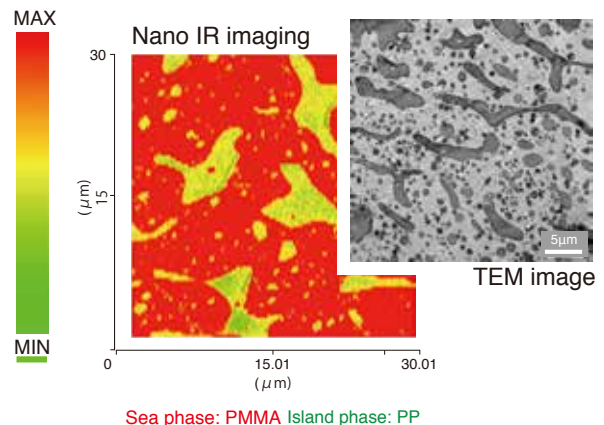


## ▶ Cellulose nanofiber-based composite material



It is possible to observe conditions of inside of cellulose nanofiber phase.

## ▶ Polymer-based composite material (polymer alloy)



Sea phase: PMMA Island phase: PP