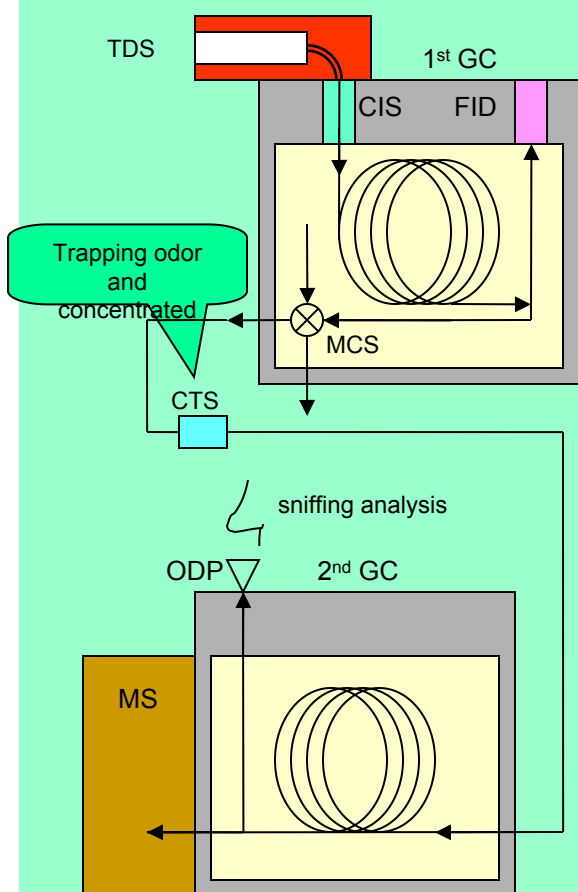


Identification of an odor substance by simultaneous analysis of GC/GC/MS and sniffing analysis(2)

Summary

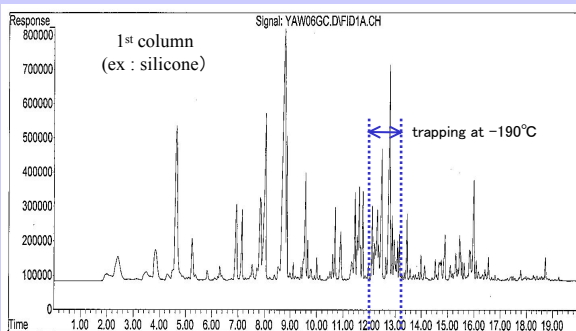
TDS-GC/GC/MS-ODP system which consists of 2 sets of GC can precisely identify an odor substance from synthetic plastics etc. through the process that, a small fraction of an odor substance is separated from major interfering substances with analysis of an odor substance by the first column(e.g. non-polar column), after the first column, an odor substance is trapped, concentrated and delivered to the second column(e.g. polar column) and MS and sniffing analysis by CTS and MCS.

TDS-GC/GC/MS-ODP Device

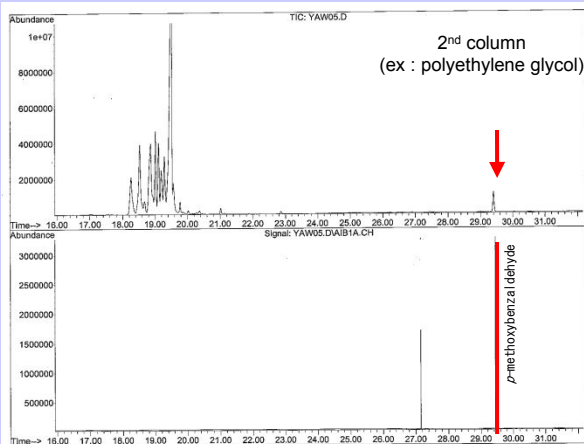


ODP: olfactory detector port TDS: thermal desorption system
 CTS: cryo trapping system MCS: multi column system

chromatogram by 1st GC



chromatogram by 2nd GC/MS



Mitsui Chemical Analysis & Consulting Service, Inc.

E-mail: sod-mcanac@mitsuichemicals.com

<http://www.mcanac.co.jp/>